

# Polyurethane Foam Insulation for existing, uninsulated wall cavities.

ENERGY-EFFICIENT.

STRONG.

HEALTHY.

RESPONSIBLE.

QUIET.

THE IDEAL  
RETROFIT  
SOLUTION

**GacoRetroFill**  
POLYURETHANE FOAM INSULATION

## CONTRACTOR / APPLICATOR BENEFITS

**EXPANDED SCOPE OF WORK.** Differentiate yourself and increase sales by adding retrofit applications to your services.

**LESS DOWNTIME.** With less seasonal restrictions, the re-insulation market offers significant growth potential throughout the year.

**NO SPECIAL EQUIPMENT.** Install using the same equipment you use for Gaco's other spray foam insulation products.

**EASY TO INSTALL.** Ideal for existing homes and buildings with uninsulated wall cavities; install from exterior or interior.

## HOMEOWNER / BUILDING-OWNER BENEFITS

**ENERGY EFFICIENT.** High R-value and a seamless air barrier reduce air leakage and lower energy costs.

**LONG TERM VALUE.** Will not shrink, settle or sag; provides a seamless insulation barrier year after year.

**HEALTHY.** Reduces condensation, moisture and mold, improving occupant comfort, health and safety.

**QUIET.** Acts as a sound barrier to help block airborne noise and absorb sound.



# Polyurethane Foam Insulation for existing, uninsulated wall cavities.

## What is GacoRetroFill?

GacoRetroFill is a two-component open cell polyurethane foam designed specifically for injection into a variety of empty cavities in both residential and commercial applications. The two components leave the gun as a liquid and react inside the cavity to create foam.

GacoRetroFill provides your customers the same benefits as all Gaco spray foam insulation products – high R-value (3.8 per inch) and seamless air barrier help reduce energy costs by up to 40%; it eliminates drafts for increased comfort; and it creates a quieter home by blocking and absorbing airborne noise.

## Why is GacoRetroFill the Best Solution?

How GacoRetroFill is different is the key. While other injection foam insulations leave voids and deteriorate if not protected by an air barrier, GacoRetroFill is both insulation AND air barrier – and because it won't shrink, settle or sag, it will continue to provide seamless insulation, energy savings and comfort year after year.

It is also much easier to install than other injection foams. No special equipment is required; install GacoRetroFill using the same equipment you use for Gaco's other spray foam insulation products. Just add a Pour Cap and Tubing. And because it contains no formaldehyde and is formulated with a highly reactive catalyst, there is very low odor during installation.

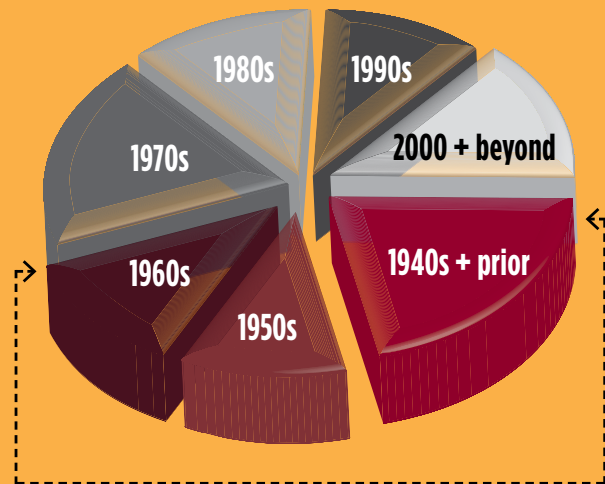
GacoRetroFill installs more quickly than conventional insulation products – approximately 8 seconds per 8' wall cavity. Plus there is less mess, allowing you to get off the job site in less time, and on to the next job.



## What is the Market Potential?

- Total U.S. Homes Today: Over 130 million
- 44% were built before 1970 (approximately 57 million); these homes are more likely to have no existing insulation in the walls.
- GacoRetroFill may be installed from either the interior or the exterior of the home, depending on the exterior cladding type.

US Housing Stock by Year Built



44% of US homes (approximately 57 million)



## Percentage of homes in select cities that were built PRIOR TO 1960.

New York .....	66%	Chicago .....	67%
Seattle .....	50%	New Orleans.....	54%
Los Angeles .....	49%	St. Louis.....	77%



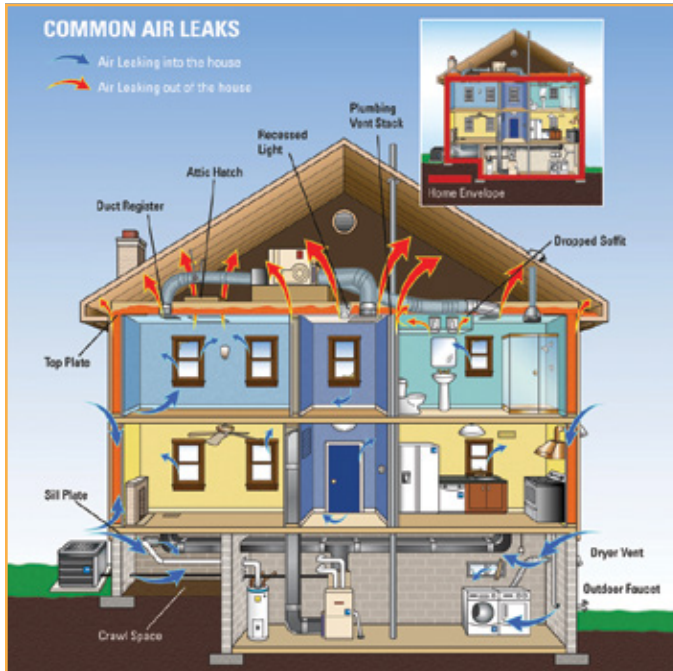


# Gaco WallFoam

SPRAY POLYURETHANE FOAM INSULATION

## The Whole-House Solution

Use GacoRetroFill in conjunction with other Gaco spray foam products to provide a whole-house insulation and air-sealing solution for improved energy efficiency.



## Sales Tools

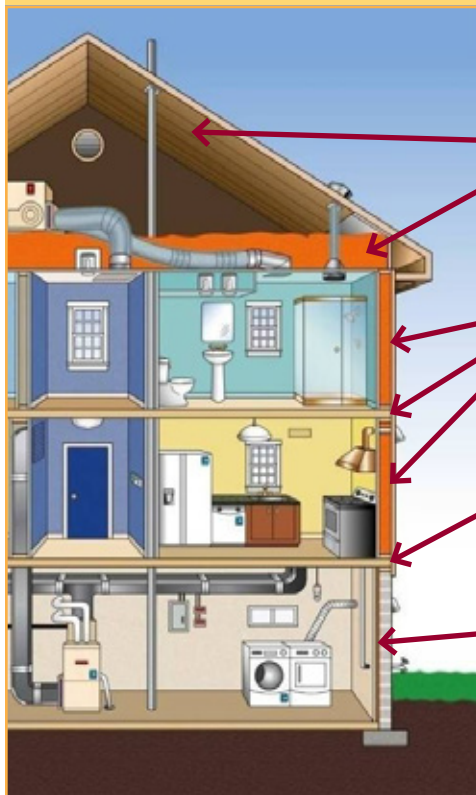
Brochures and postcards available to help you promote GacoRetroFill. Customized artwork with your logo and contact information available at no charge.

### Homeowner postcard



### Homeowner brochure

Gaco Western products seal & insulate the entire building shell.



**GacoFireStop2**  
**Gaco 052N**  
**Gaco 183M**

**GacoRetroFill**

**GacoFireStop2**  
**Gaco 052N**  
**Gaco 183M**

**Gaco 183M**



Contact us today for more information  
about GacoRetroFill.

877 699 4226  
insulate@gaco.com  
gaco.com

## GacoRetroFill Polyurethane Foam Insulation Data Sheet

GacoRetroFill FR6500R is a two-component polyurethane foam that cures to a low-density cellular insulation material. It is recommended for use in a variety of empty cavities in both residential and commercial applications.

### PHYSICAL PROPERTIES

PROPERTY	TEST TEMPERATURE	ASTM TEST	VALUE	UNIT
In-Wall Density	77°F (25°C)	D1622	0.65	pcf
Preliminary R-Value*: *See Note Below	75°F* (23.9°C)	C518	13.3 at 3.5" 3.8 per inch at 3.5" and above	h · ft <sup>2</sup> · °F/Btu

\*NOTE: Federal Trade Commission regulations published in the Federal Register 16 CFR Part 460 require that R value testing of polyurethane foam insulation must be conducted on aged samples at a 75°F mean test temperature. Failure to comply can result in substantial fines by the FTC.

### SURFACE BURNING CHARACTERISTICS

Class A (Class I) when tested per ASTM E84 (Also known as ANSI 2.5, NFPA 255, UBC 8-1 (42-1) and UL 723)

SYSTEM	THICKNESS	FLAME SPREAD INDEX	SMOKE DEVELOPED INDEX
GacoRetroFill FR6500R	4.5" (11.4 cm)	10	450

### TYPICAL LIQUID CHEMICAL PROPERTIES

"A" Side contains polymeric isocyanate. "B" Side contains polyols, catalysts and blowing agents.

PROPERTY	TEST TEMPERATURE	ASTM TEST	UNIT	VALUE
Viscosity – "A" Component:	77°F (25°C)	D2196	cps	180 ± 20
Viscosity – "B" Component:				100 ± 20
Lbs/gal and S.G. – "A" Component:	77°F (25°C)		lbs/gal and S.G.	10.3 / 1.23
Lbs/gal and S.G. – "B" Component:				9.77 / 1.17
Mixing Ratio – "A" & "B" Component	77°F (25°C)		By volume	1:1
Stability When Stored at 50°F to 70°F (10°C to 21°C)			Months	"A" Component: 12 months "B" Component: 6 months

### EQUIPMENT SETTINGS\*

SETTING	VALUE
Pre-Heat: Iso (A)	110°F - 130°F (43°C - 54°C)
Pre-Heat: Poly (B)	110°F - 130°F (43°C - 54°C)
Hose Heat	110°F - 130°F (43°C - 54°C)
Recommended Spray Pressure	800 - 1,200 psi (dynamic)

\*At 70°F ambient temperature, recommended start settings are 115°F and 1,000 psi.

### PRODUCT CHARACTERISTICS

CHARACTERISTIC	VALUE
Cream Time	1 - 3 sec
Tack Free Time	8 - 12 sec
Cure Time	4 hours